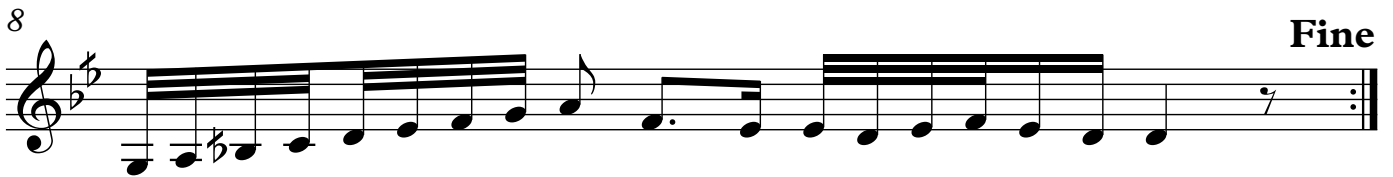
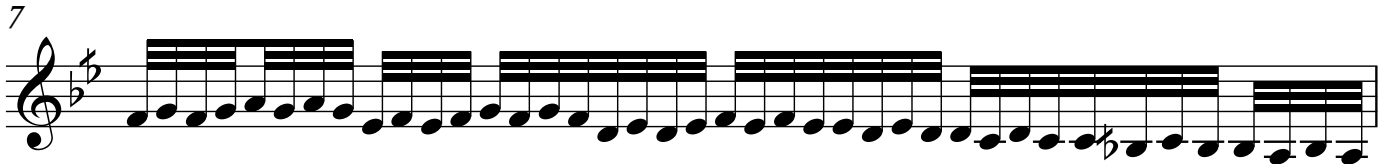
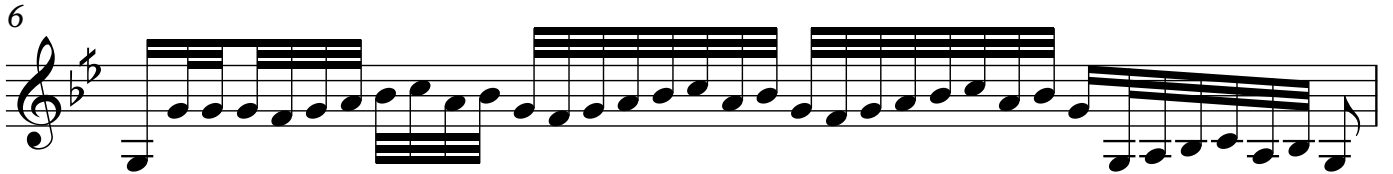
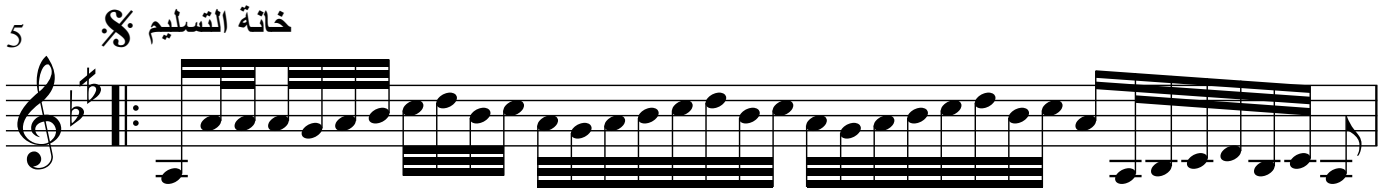
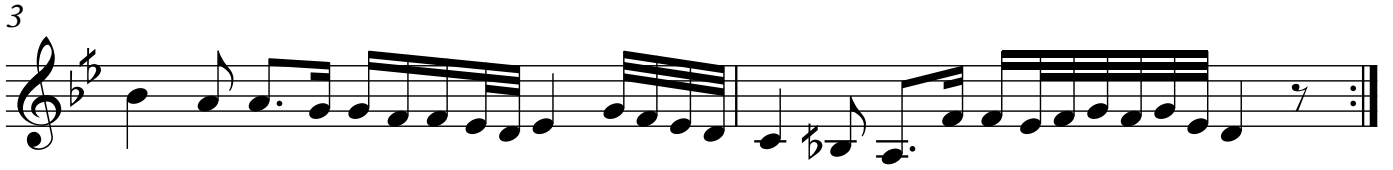


# سماعي بيات مرسيل

تأليف : مرسيل خليفه

تدوين : خالد صدوق

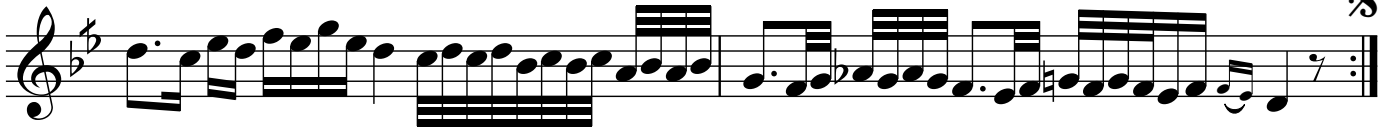
الخانة الأولى



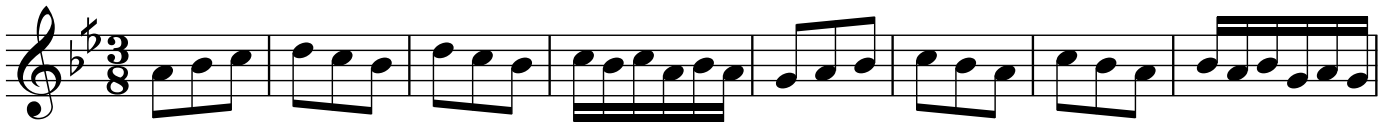
13 الخانة الثالثة



15



الخانة الرابعة



The image displays a musical score for the piece 'سماعي بيات مرسيل'. It consists of five staves of music, all written in a single treble clef. The key signature is one flat (B-flat), and the time signature is 7/8. The first staff begins with a treble clef, a key signature of one flat, and a 7/8 time signature. The melody starts with a quarter note, followed by eighth notes, and includes a measure with two eighth rests. The second staff continues the melody with eighth notes and quarter notes. The third staff features a series of eighth notes, some beamed together. The fourth staff shows a change in the rhythmic pattern with quarter notes and eighth notes, and includes a repeat sign with a 7/8 time signature. The fifth and final staff concludes the piece with a double bar line and a fermata symbol.