

March Slav

Moderato

Tchaikovsky

Viola

Musical notation for the Viola part of the first system. It consists of a single staff in 4/4 time with a key signature of one sharp (F#). The melody begins with a quarter rest, followed by a series of eighth and quarter notes: F#, G, A, B, C, D, E, F#. There are three measures of eighth-note pairs (G-A, B-C, D-E, F-G, A-B, C-D) and a final quarter note. The first two measures are grouped by a slur.

f

Piano

Musical notation for the Piano accompaniment of the first system. It consists of three staves: treble, middle, and bass clefs. The treble clef has chords: F#-G, A-B, C-D, E-F#, G-A. The middle clef has chords: F#-G, A-B, C-D, E-F#, G-A. The bass clef has a steady eighth-note accompaniment: F#, G, A, B, C, D, E, F#. The first two measures are grouped by a slur.

f

Musical notation for the Viola part of the second system. It continues the melody with eighth-note pairs: G-A, B-C, D-E, F-G, A-B, C-D. The first two measures are grouped by a slur.

Musical notation for the Piano accompaniment of the second system. It continues the accompaniment with chords: F#-G, A-B, C-D, E-F#, G-A. The first two measures are grouped by a slur.

Musical notation for the Viola part of the third system. It continues the melody with eighth-note pairs: G-A, B-C, D-E, F-G, A-B, C-D. The first two measures are grouped by a slur.

Musical notation for the Piano accompaniment of the third system. It continues the accompaniment with chords: F#-G, A-B, C-D, E-F#, G-A. The first two measures are grouped by a slur.

March Slav, p.2

The image shows a musical score for 'March Slav, p.2'. It consists of three staves. The top staff is a single staff with a bass clef, containing a whole rest in the first measure, followed by a half note G2, a half note F2, and a whole note E2 in the second, third, and fourth measures respectively. A slur covers the second, third, and fourth measures. The word 'rit.' is written below the staff between the second and third measures. The middle staff is a grand staff with a treble clef and a bass clef. The treble clef staff contains a whole rest in the first measure, followed by a half note G4, a half note F4, and a whole note E4 in the second, third, and fourth measures respectively. The word 'rit.' is written below the staff between the second and third measures. The bass clef staff contains a quarter note G2, a quarter note F2, a quarter note E2, a quarter note D2, a quarter note C2, and a quarter note B1 in the first measure. In the second measure, there is a whole note G2. In the third measure, there is a whole note F2. In the fourth measure, there is a whole note E2. The word 'rit.' is written below the staff between the second and third measures.

March Slav

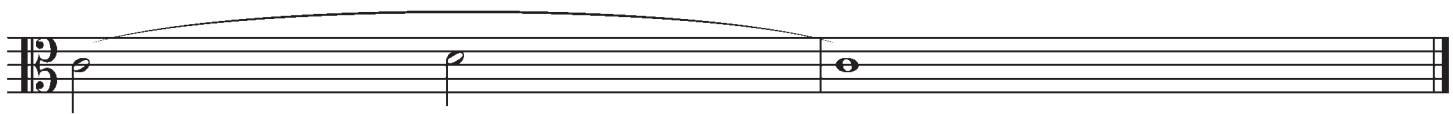
Viola

Tchaikovsky

Moderato



f



rit.